

This stunning Georgian-style estate home is set upon a wide estate lot with a gracious paver motor court. "The directive that I gave to myself was to make the exterior of the house impressive yet draw people into it," explains architect Clifford Scholz. Three arches at the floorplan are a symbol of invitation seen in Palladian architecture. A light-filled modified floorplan is revealed upon entering the home.

The stately Georgian-style home is a bridge between its historical architectural roots and today's modern living. The classical exterior gives way to a more current, open, and light-filled floorplan, masterfully complemented by interior furnishings from Century Furniture in this *Home & Design* Magazine "Signature Home."



The living area provides a relaxed sophistication, showcasing pieces from the Windsor Smith for Century Furniture collection. Twin Trace cabinets flank the fireplace. Nest cocktail tables in two sizes are situated in front of the deep-seated Windsor Smith Daybreak sofa and Cloud chairs. A light and neutral color scheme focuses on luxurious textures and tonal patterns. Clean, white accessories are from Global Views. The subtle softness allows attention to remain on the room's beautiful connection to the outdoor spaces.

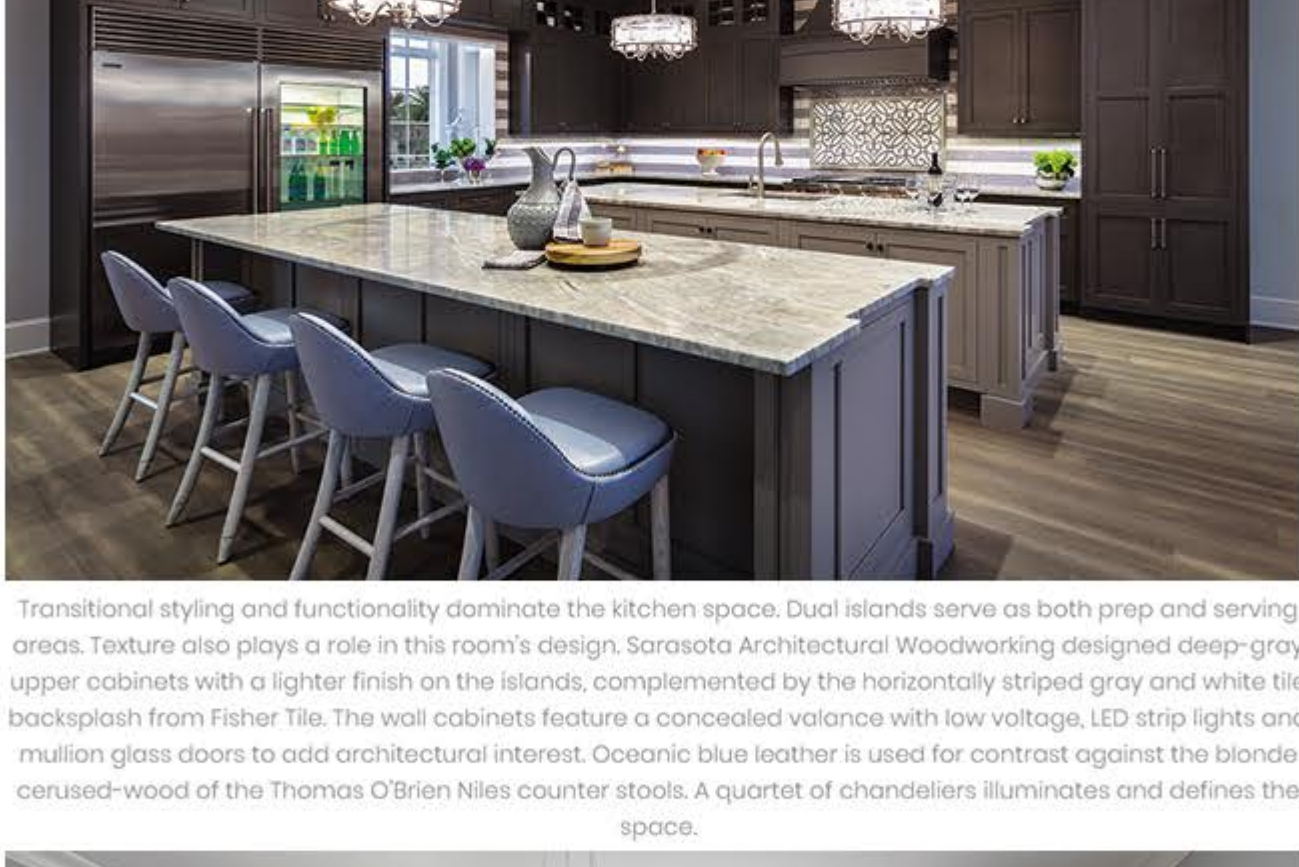


The inviting spiral stairway construction and rich wood finish detail by Trinity Custom Construction sets the tone upon arrival in the foyer. Columns and architectural detailing give significance to the entry which opens to views of the pool and backyard.

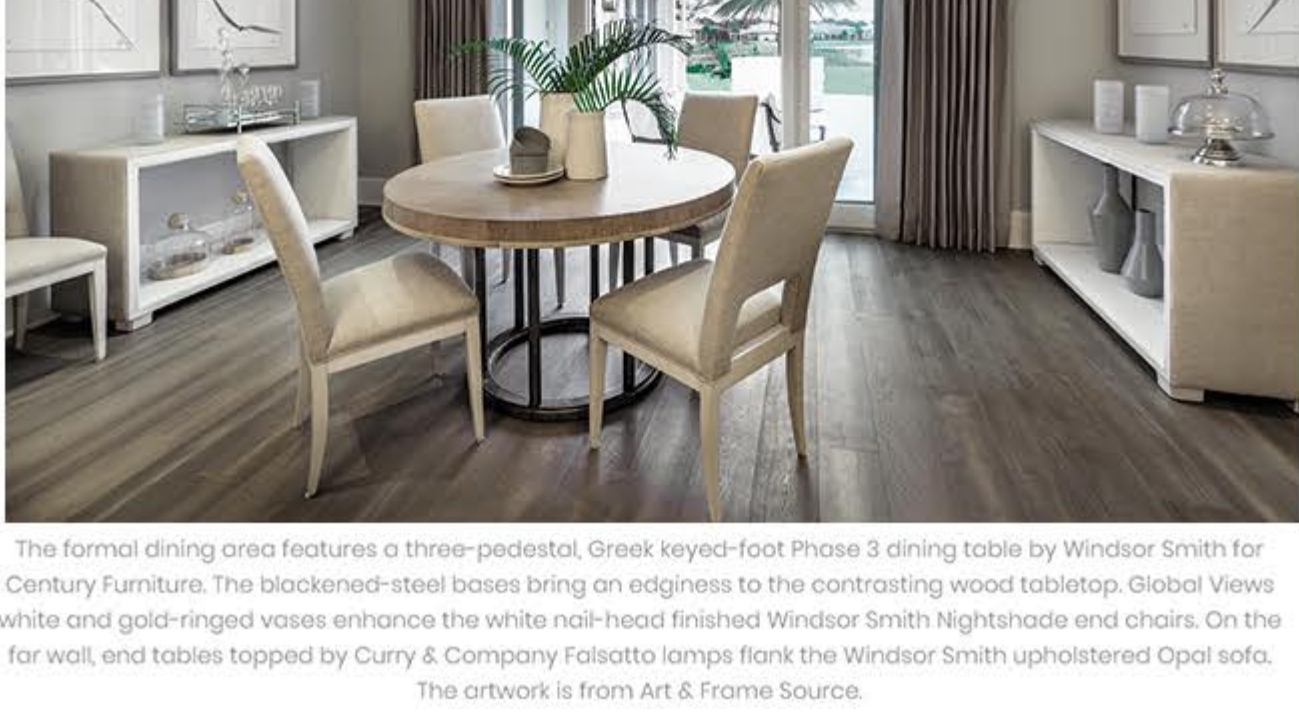
Architect Clifford Scholz of Clifford M Scholz Architects and custom home builder Ricky Perrone of Perrone Construction share a 30-year relationship, and had the common vision to design and build a residence with timeless craftsmanship and elegance.

"I refer to this home's particular style as modern classicism," explains Scholz. It is revisiting forms and shapes and proportions but with a modern approach to integrate our client's lifestyles, wants, needs, and desires into the classical structure."

Situated on a large estate lot in The Concession in Bradenton, the five-bedroom, nearly 6,800-square-foot home makes extensive use of glass to integrate with the large outdoor living areas—something Scholz notes would not have been part of an old Georgian design. Builder Ricky Perrone says the home was intended to set the standard in the community's exclusive Parkstone Terrace enclave.



Transitional styling and functionality dominate the kitchen space. Dual islands serve as both prep and serving areas. Texture also plays a role in this room's design. Sarasota Architectural Woodworking designed deep-gray upper cabinets with a lighter finish on the islands, complemented by the horizontally striped gray and white tile backsplash from Fisher Tile. The wall cabinets feature a concealed valance with low voltage, LED strip lights and mullion glass doors to add architectural interest. Oceanic blue leather is used for contrast against the blonde cerused-wood of the Thomas O'Brien Niles counter stools. A quartet of chandeliers illuminates and defines the space.

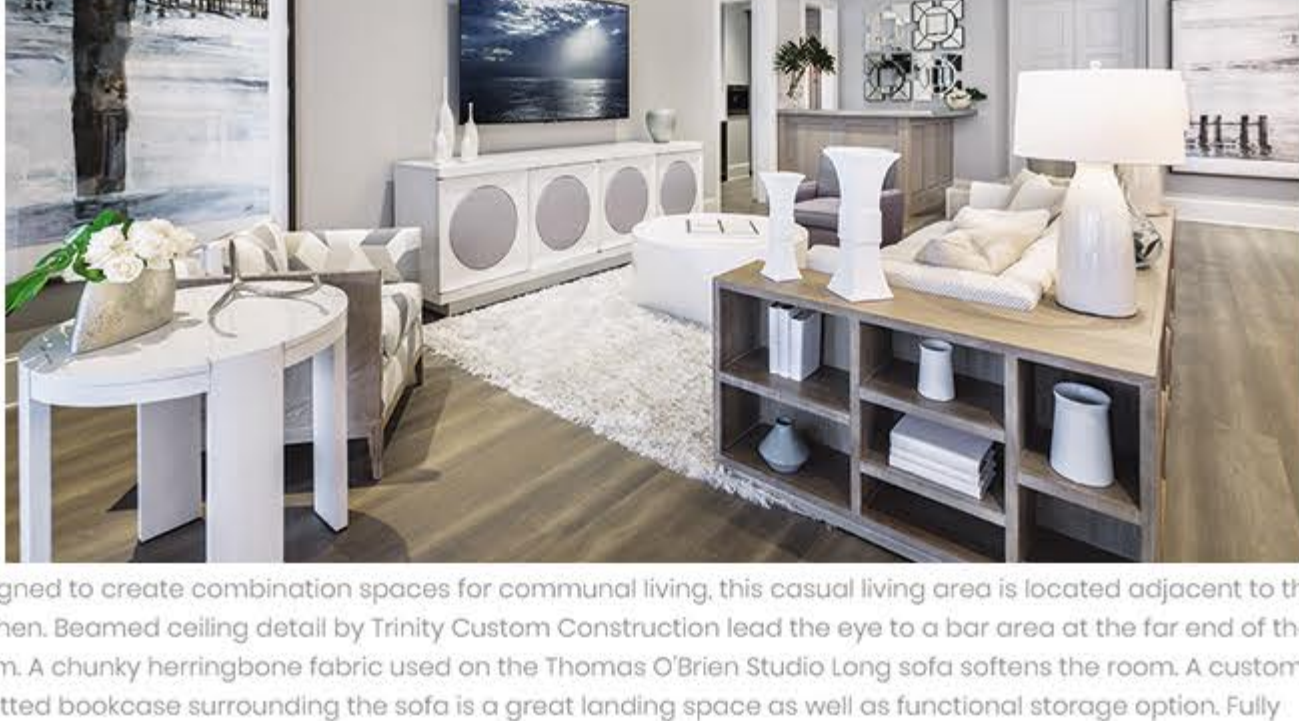


The formal dining area features a three-pedestal, Greek keyed-foot Phase 3 dining table by Windsor Smith for Century Furniture. The blackened-steel bases bring an edginess to the contrasting wood tabletop. Global Views white and gold-ringed vases enhance the white nail-head finished Windsor Smith Nightshade end chairs. On the far wall, end tables topped by Curry & Company Faisatta lamps flank the Windsor Smith upholstered Opal sofa.

The artwork is from Art & Frame Source.

"Everything we do as a builder is about creating the highest levels of quality," notes Perrone. "We do that through material selection, through our selection of subcontractors, and the management that we put into place on our projects."

Emilio Sadez, President of International Design Source Sarasota, approached builder Perrone about the collaboration with Century Furniture to distinguish the home's interiors. Unlike previous Signature Homes which featured a single iconic interior designer, this project features the entire Century family of designers and their collections.



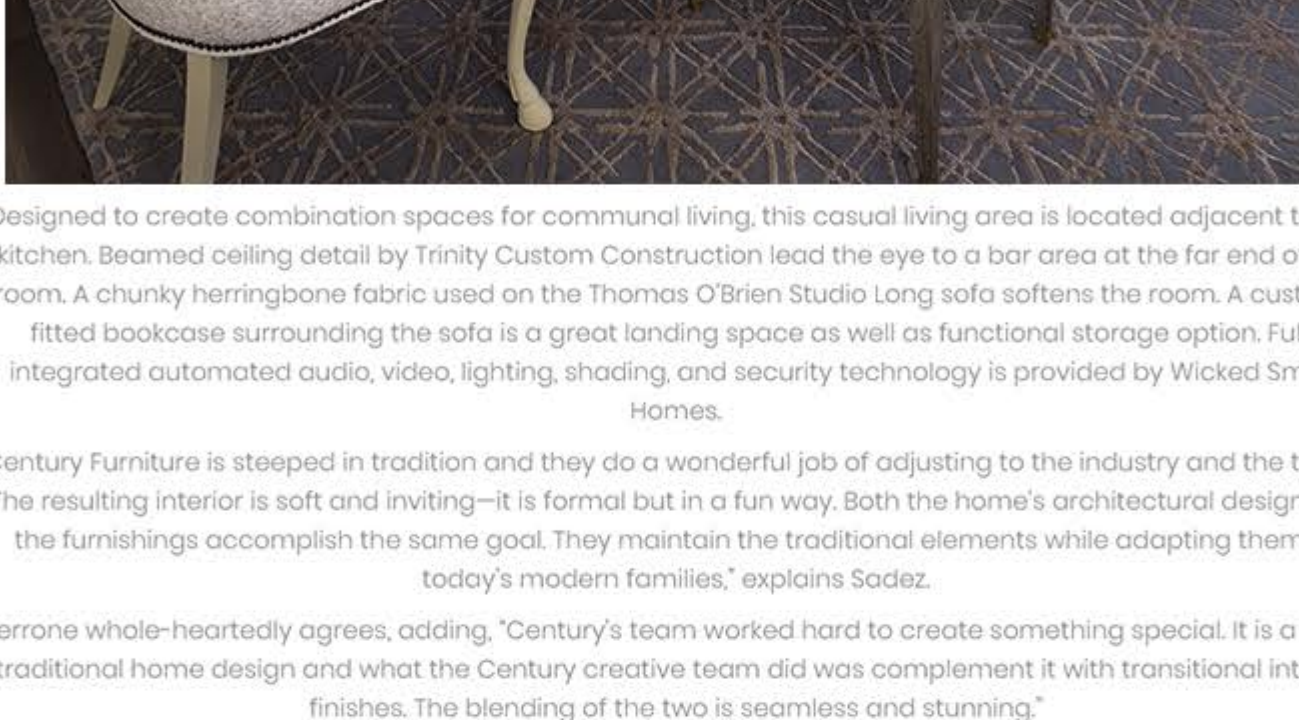
Designed to create combination spaces for communal living, this casual living area is located adjacent to the kitchen. Beamed ceiling detail by Trinity Custom Construction lead the eye to a bar area at the far end of the room. A chunky herringbone fabric used on the Thomas O'Brien Studio Long sofa softens the room. A custom-fitted bookcase surrounding the sofa is a great landing space as well as functional storage option. Fully integrated automated audio, video, lighting, shading, and security technology is provided by Wicked Smart Homes.



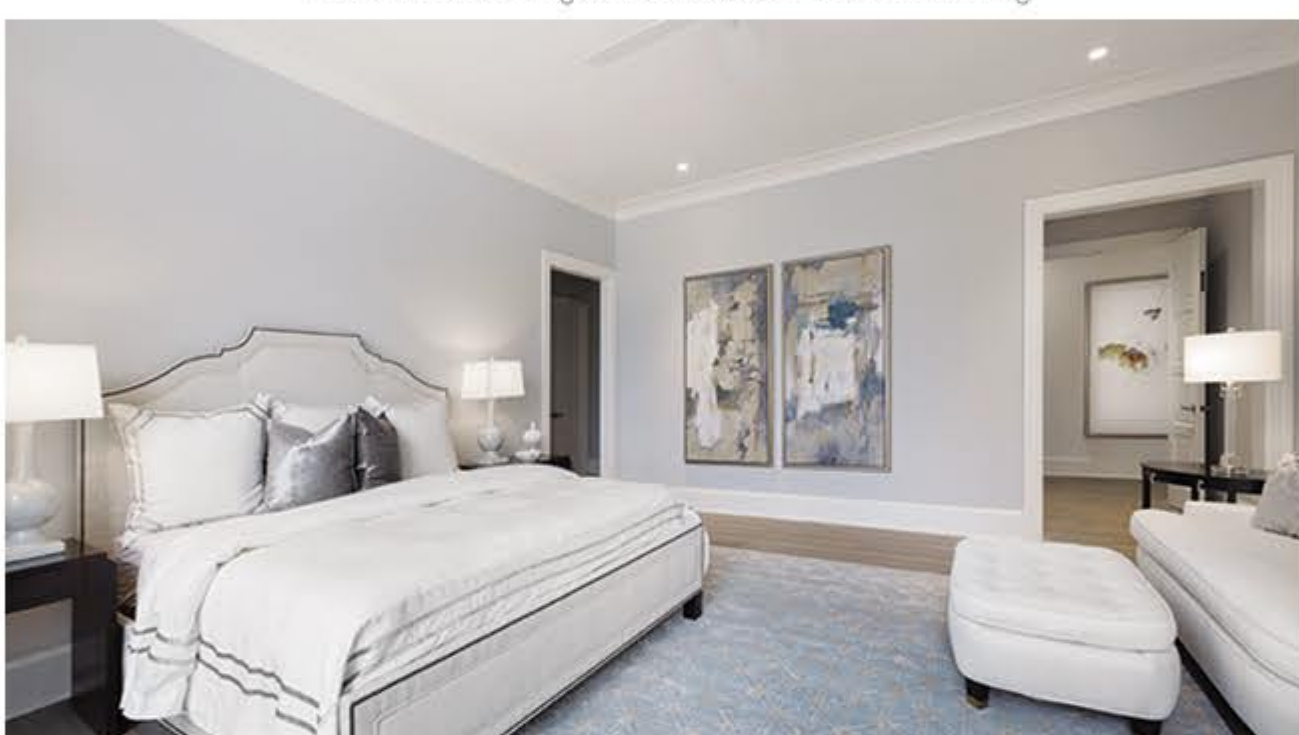
Designed to create combination spaces for communal living, this casual living area is located adjacent to the kitchen. Beamed ceiling detail by Trinity Custom Construction lead the eye to a bar area at the far end of the room. A chunky herringbone fabric used on the Thomas O'Brien Studio Long sofa softens the room. A custom-fitted bookcase surrounding the sofa is a great landing space as well as functional storage option. Fully integrated automated audio, video, lighting, shading, and security technology is provided by Wicked Smart Homes.

"Century Furniture is steeped in tradition and they do a wonderful job of adjusting to the industry and the trends. The resulting interior is soft and inviting—it is formal but in a fun way. Both the home's architectural design and the furnishings accomplish the same goal. They maintain the traditional elements while adapting them to today's modern families," explains Sadez.

Perrone whole-heartedly agrees, adding, "Century's team worked hard to create something special. It is a more traditional home design and what the Century creative team did was complement it with transitional interior finishes. The blending of the two is seamless and stunning."



The master bedroom is a serene retreat featuring the Thomas O'Brien for Century Furniture collection. The Fifth Avenue king bed and Brentwood night tables have a City Dark finish. Currey & Company table lamps add a hint of subtle color. Both classic and calming in its simplicity, the gracious room affords ample space for an upholstered plush down Marielle sofa and ottoman. The room's artwork is from Leftbank Art.



Completing the luxurious master suite, a spa-like retreat is found in the master bath. Spacious his and her marble-topped vanities flank a sculptural tub with freestanding faucet. A separate area houses the graciously sized walk-in shower area and sauna.



The outdoor area is thoughtfully designed for luxurious entertaining. The main house and the cabana guest suite surround the pool area which overlooks the greenery of the backyard. The outdoor furnishings are Andalusia by Richard Frinier for Century Furniture. Resort-style single and double chaises are situated along the length of the custom pool. The home's interior spaces open to Andalusia-furnished conversation and dining areas beneath the covered terrace. Each of three second-level guestrooms adjoin the living area of a shared outdoor terrace meant to encourage more social living.

Clifford M. Scholz Architects
300 South Orange Avenue
Sarasota, FL 34236
941.364.4600